

HERON

NEWS & VIEWS IN ADDISCOMBE EAST

AUTUMN 2018



MEET THE
ADDISCOMBE ARTIST
CAPTURING CROYDON
ON CANVAS

&

PLANNING DEVELOPMENTS, ONE-WAY
TRAFFIC FLOWS, LOCAL EVENTS AND,
OF COURSE, RECYCLING BINS

DELIVERED **FREE** TO HOUSEHOLDS IN THE H.O.M.E AND CHASE RESIDENTS' ASSOCIATIONS AREAS

INSIDE

WELCOME . 5

Step in to your new neighbourhood magazine

THE CROYDON CAT KILLER . 6

Campaigners are unconvinced by police claims that foxes are to blame for the on-going mutilation of cats

LOCAL LEGENDS . 8

Addiscombe Railway Station's ghostly legacy

KNOWING YOUR NEIGHBOURS . 10

Artist Bev Jones brings a positive perspective to local scenes

RECENT DEVELOPMENTS . 14

Cautionary tales of in-fill housing affecting the local character

PRIDE IN OUR HIGH STREET . 19

Business profile: The Tram Stop Café

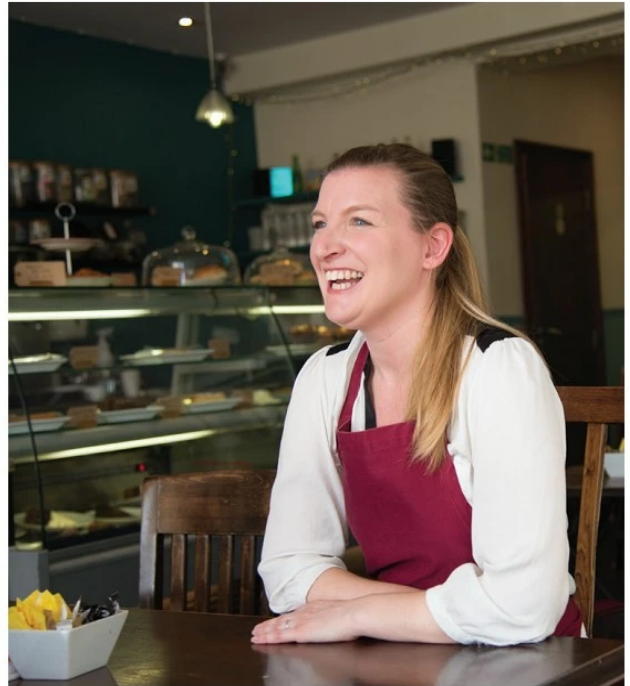
CROSS-PARTY CO-OPERATION . 21

What's it like for political opponents sharing responsibility for the ward's well-being?

19

SERVICE WITH A SMILE

THE JOURNEY TO THE POPULAR TRAM STOP CAFÉ



6

NOT HAVING IT
THE CROYDON CAT
KILLER – DOES ANYONE
BELIEVE THAT FOXES ARE
RESPONSIBLE?



10

CROYDON IN
COLOUR
SEEING THE
BOROUGH'S
BRIGHTER SIDE

8

LOCAL LEGENDS
THE LATE TRAIN
DRIVER'S TALE



RECYCLING BY THE RULES . 26

The definitive guide to which plastics are and aren't recyclable in Croydon

COMMUNITY POLICING . 29

Addiscombe East's all-new Safer Neighbourhood Team



21

SETTING ASIDE DIFFERENCES
GETTING DOWN TO BUSINESS IN A TWO-PARTY WARD

BINS, BINS BINS! . 30

Are your new recycling bins right for you?

RESIDENTS' ASSOCIATIONS NEWS . 33

Community collaborations, social events and the impact of the one-way system

NEXTDOR . 39

The hyper-local social networking app

EVENTS . 40

Seasonal fairs, meet-ups and other happenings in and around Addiscombe

THE LAST WORD . 45

A reader's view on parking

CREDITS . 46

Thanks to this issue's contributors



30

BINS, BINS, BINS!
CROYDON'S FAVOURITE CONVERSATION STARTER

Portman Cars

Quality Used Vehicle Sales in Croydon

We take pride in our professionalism and extremely competitive rates. Join the growing number of customers who will accept nothing less than the honest and efficient service we provide.

Sales

Our pool of around 30 quality cars, from Mercedes to Micra, ensures we always have something for everyone.

Service

Our fully-equipped vehicle workshop and dedicated team of trained technicians ensure that we can provide speedy repairs and service to all makes of car.

MOTs

We provide fuss-free and fast turnaround MOTs, often while you wait and with a collection service available.

Opening Times

Monday	9:00 am to 6:00 pm
Tuesday	8:00 am to 6:00 pm
Wednesday	8:00 am to 6:00 pm
Thursday	8:00 am to 6:00 pm
Friday	8:00 am to 6:00 pm
Saturday	9:00 am to 5:00 pm
Sunday	Open by appointment

Email: portmancars@hotmail.co.uk
Telephone: 020 8656 2001
Freephone: 0800 566 8393

121-123 Lower Addiscombe Road
Croydon CR0 6PU
www.portmancars.org.uk





THE GATE AT HERON'S CROFT,
ADDISCOMBE'S OLDEST SURVIVING
RESIDENCE AND A LISTED BUILDING OF
HISTORIC INTEREST

WELCOME TO HERON

This magazine is a source of information and entertainment for people living in, working in and visiting Addiscombe. We showcase the best of local shops, trades, people and events, as well as looking at issues that affect us all.

Heron is published by CHASE and H.O.M.E residents' associations and produced by publishing professionals living in Addiscombe, who provide their services to this community magazine free of charge. It is delivered to some 2,000 homes and available in select shops and cafés.

Heron takes its name from the founding family of the Addiscombe Estate who settled in this area over five centuries ago.

CHASE RESIDENTS' ASSOCIATION

www.chaseresidents.org.uk

E: contact@chaseresidents.org.uk

T: 0796 065 5984

P: c/o CHASE Residents Secretary
18B Nicholson Road CR0 6QS

H.O.M.E RESIDENTS' ASSOCIATION

www.home.addiscombe.net

E: athome@addiscombe.net

T: 020 8654 6437

P: c/o H.O.M.E Residents Secretary
11 Havelock Road CR0 6QQ

COVER: ARTIST BEV JONES WITH A *NEW DAY* [ACRYLIC ON STRETCHED CANVAS], A VIEW OF LEBANON ROAD TRAM STOP

NOT AN OPEN AND SHUT CASE?

NOT THREE WEEKS HAD PASSED SINCE THE METROPOLITAN POLICE ANNOUNCEMENT THAT THEY WERE CLOSING THE 'CROYDON CAT KILLER' CASE, WHEN A LOCAL RESIDENT FOUND HERSELF MOURNING THE LOSS OF HER PET

ARTICLE BY SUSANNE KELLY

The pet in question, Ginger, had injuries that seem to indicate a person with a weapon, and not a fox, had been involved.

Asked about closing the case, a Metropolitan Police spokesperson said: "We note some media reports state our investigation showed cats in Croydon and elsewhere were killed by foxes.

"In fact, the cats were killed due to major blunt force trauma consistent with vehicle collisions. Scavenging foxes then mutilated body parts – especially heads and tails."

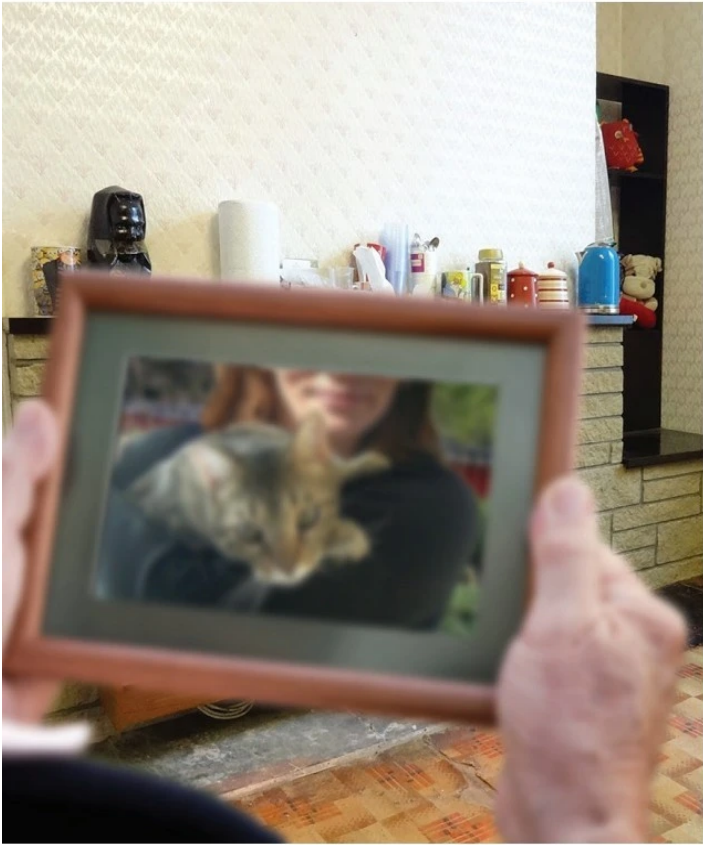
The Metropolitan Police may have closed their books on investigating

whether or not a dangerous person or persons has been killing pets, but the group South Norwood Animal Rescue and Liberty [SNARL] are still investigating.

A spokeswoman from SNARL said: "[We] had a massive response to our call for ex-police and forensics people to help."

SNARL's response to the police closing the investigation can be found on its Facebook page. The statement reads in part:

"We find it difficult to understand how foxes can replicate this [mutilation of pets] perfectly across a range of victims across a vast geographical area.



“What has also not been explained is why we have no cases in Scotland or Wales, Devon, East Anglia, Suffolk, Rutland, etc. given that we have rescue and lost and found contacts there who would notify us if bodies were found.”

Foxes will occasionally scavenge road kill, but are unlikely to want to engage in fighting with sharp-clawed felines. Foxes scavenge trash and eat waste, plants, slugs and snails as a rule.

Pet lovers all over the UK are incredulous and angry over the police closure of the case which involved several hundred animals. Police footage in approximately three cases showed foxes with dead

pets – but several hundred instances of dead pets found mutilated were reported, many concentrated within the M25 area.

Some owners are insistent that the manner in which they found their beloved pets dead could not possibly have been done by foxes.

Vigilance is recommended, with the safest course of action not allowing your pet to stay out overnight [if possible] and keeping an eye on it when it is outdoors. Getting your pet microchipped can also help you find your animal should it be lost or stolen. Sadly, the theft of animals is on the rise.

If you do have any information or need help with a pet that has gone missing or been found dead, SNARL can be reached at email addresses risingboudicca@gmail.com or tjenko64@aol.com or by its contact mobile number 07961 030 064.

SNARL was set up in 2014 after many years of unofficial rescue and rehabilitation. When it can, it also tries to support local residents in caring for their cats when they experience financial difficulties. Currently it has 12 resident cats and a number of fosters and strays.

ADDISCOMBE RAILWAY STATION **A HAUNTED HISTORY**

The large brick retaining wall running most of the length of East India Way is the last visible reminder of the railway station that used to occupy this site just off Lower Addiscombe Road. Of course, a more obvious clue to the past can be found in the name of Addiscombe Railway Park at the northern end of this residential road.

The history of the station, which first opened in 1864, reflects the rapid development of suburban railways serving the sudden growth of London's outlying towns. Railway lines flourished, faded and often changed hands between private investors. Addiscombe Station was first operated by the Mid-Kent Railway Company before being taken over by South Eastern Railway within a year of opening. The station was rebuilt by London Chatham & Dover Railway in 1899. Ownership of the station and line changed hands once more before nationalisation in 1948, followed by sectorisation under Network South East and, finally, privatisation.

Serving for the most part as one end of a branch line to Beckenham, over its lifetime the station also offered routes to central London but, in its final years, it was reduced to providing a sometimes empty shuttle service to Elmers End, running on a single track. With the coming of Tramlink, which



was to take over the line from Elmers End to Woodside, it was decided to close the station and the final Addiscombe to Elmers End service ran on 31 May 1997. The derelict station was demolished in 2001 to make way for the present development of mixed flats and houses.

All very interesting – but you’ve only read this far because you were promised a ghost story?

The legend of the Addiscombe Railway Station Ghost begins in the early 1900s. Following the death of a train driver on the line, workers claimed to have seen an apparition with grey, blurred features wandering amongst the sidings. Reports of trains moving

and sounds of machinery running at night soon followed.

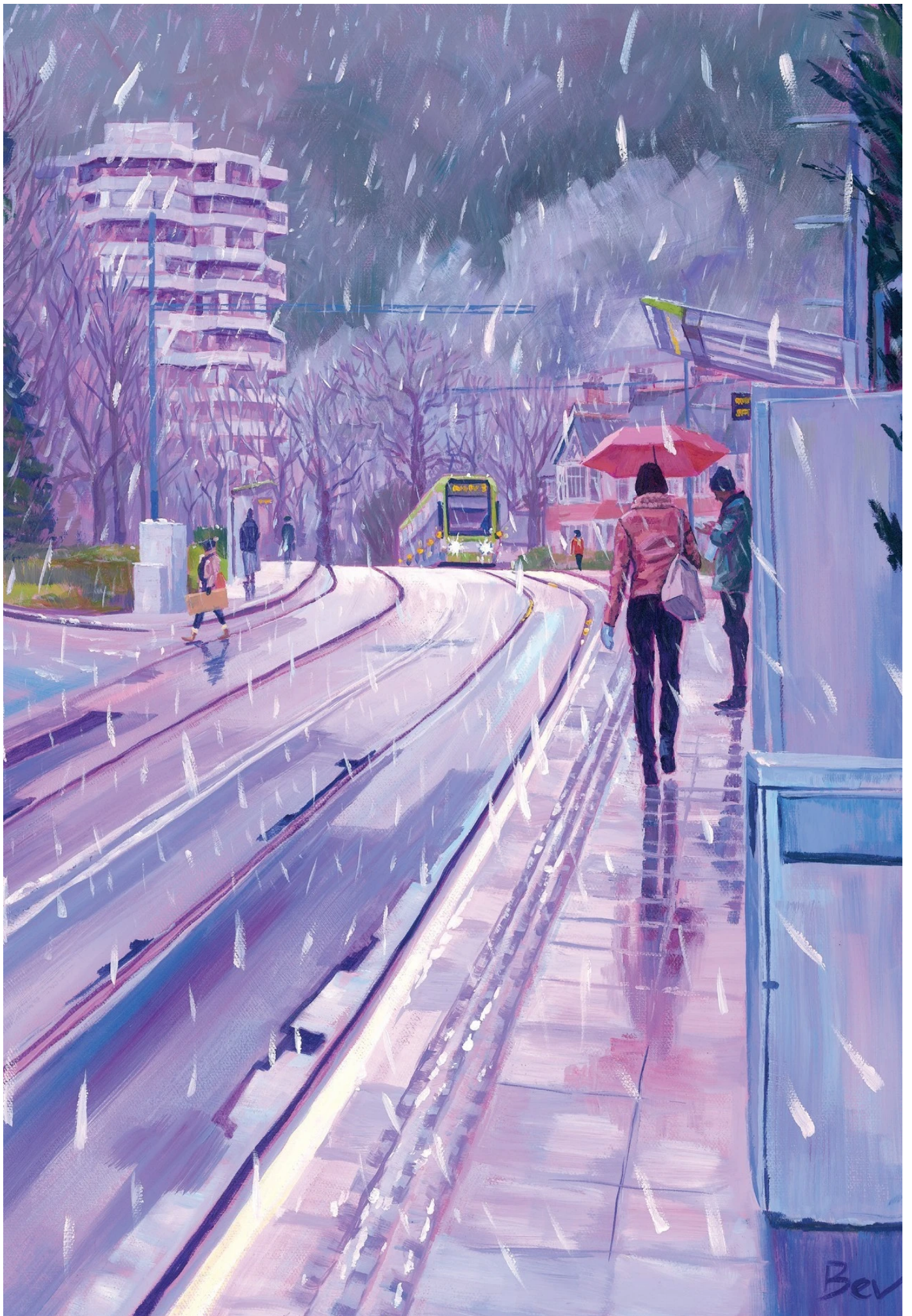
Sightings continued over the decades. Julie McNamee, in her listing of *Top 10 Haunted Train Stations* says the figure was most associated with the area around Siding No. 4, where workers had been killed by an exploding boiler. “The area around that siding was thought to be colder than elsewhere on the railway land.”

Reports of ghostly activity continued after the station’s demolition when builders working on the new houses experienced problems with their equipment and the figure of the train driver was seen by a resident in neighbouring Capri Road.

However, our own unscientific survey of a few current residents of East India Way found no one who had been affected, or even aware, of the former station site’s spooky past.



THE CHANGING FACE OF THE HIGH STREET
THE EAST INDIA WAY HOUSING DEVELOPMENT, ABOVE, SITS ON THE SITE OF THE OLD STATION, PICTURED LEFT IN 1975





PAINTING THE TOWN

YOU MIGHT HAVE SEEN HER CROYDON SCENES HANGING IN THE HALLS OF LOCAL PUBLIC BUILDINGS OR IN GALLERIES ACROSS THE COUNTRY – BUT DID YOU KNOW THAT THE ARTIST LIVES IN ADDISCOMBE? MEET BEV JONES FOR THE FIRST IN OUR SERIES OF VERY INTERESTING PEOPLE WHO JUST HAPPEN TO LIVE DOWN THE ROAD

If you have ever been at a low point, where it is a struggle to think of anything positive about daily life in Croydon, one remedy might be to view the borough through the eyes of Bev Jones. Her paintings of the local area highlight positives easily missed by those of us preoccupied with the daily grind. Rain-soaked autumn roads do not look off-putting – they shimmer and reflect soft light. Train platforms and tram stops are better described as ‘lively’ and ‘bustling’, rather than ‘crowded.’ Even the cold, damp *Sleet* [acrylic on canvas,

pictured opposite] is warmed by pink and orange highlights and rosy undertones.

However, if you accuse Jones of being an irrepressible optimist, she will soon set you straight. “Given the time it takes to work on a painting [often several weeks] it helps for me to look for the positive. I know that some prefer dark and sombre scenes but it wouldn’t be nice for me to spend all that time focusing on negative things.

“I grew up in a very small village in Wales and had some pretty bad

KNOWING YOUR NEIGHBOURS

experiences there. As a teenager and young adult crowds of people rather freaked me out. I started drawing crowds partly as a way to calm down and be in the space with lots of other people.

“These days I think it just comes naturally to focus on the positive possibilities and the connections between people and places, rather than focusing on negative potentials. It helps that Croydon has been good for me and I’ve had lots of positive experiences here.”

Jones’ positive experiences of the area include making the most of Croydon’s parks and woodlands, cycling and taking long walks with Melanie, her wife of seven years. They spend leisure time shopping and visiting cafés in the ‘Addiscombe Village’ area. They have become regulars of the recently-opened café at Ashburton Hall.

The local idyll is accentuated in Jones’s art. The roads are recognisable, yet they are unspoilt by familiar heavy traffic and feature very few cars. This is because she works from reference photos often taken to capture best light and calmest moments. But this is not to suggest that her work is saccharine or sanitised.

Vivid details include imperfections in roads and buildings and crumpled bags and clothing, leaving no doubt

that views are grounded in real locations.

Jones’s trademark vibrant-calm approach, notably applied to popular paintings of Surrey Street Market, has brought life to similar settings in areas including Borough and Brixton markets. A scene of the latter was ‘highly commended’ at last year’s Patchings Art Prize in Nottingham.

Jones was first encouraged to pursue her talents with gifts of artists’ materials from parents she describes as “very artistic.” Her formal training includes studying Art to GCSE and a BTEC in Art, “supplemented by a few life classes here and there.” She recently has led art lessons at classes for the over-60s club at Thackery House in Addiscombe Road.

Jones’s international reputation is growing. Her work hangs in homes as far as Australia and the USA, due in part to her online shop featuring small prints priced at £50 to original works in acrylic for up to £1,250.

Locally, Jones’s paintings can be viewed at the Paxton Centre in Crystal Palace until the end of November, at the Clock Tower Café in central Croydon in December and at the Made in Croydon Markets at Boxpark on 25 November and 16 December. The Surrey Art Fair will feature her work at Sandown Racecourse from 15–17 March.

Sullivan's Florist

*Flowers for all occasions
Funeral specialist | Bespoke tributes*

☎ 020 8676 1234 **f** www.facebook.com/sullivansfloristcroydon

289 Lower Addiscombe Road, Croydon CR0 6RD



WALK THIS WAY [ACRYLIC ON CANVAS]—A VIEW OF ADDISCOMBE TRAM STOP HANGING IN THE HOME OF A NEW YORK COUPLE. ORIGINAL WORKS AND HIGH QUALITY REPRODUCTIONS BY BEV JONES ARE FOR SALE AT WWW.ETSY.COM/UK/SHOP/BEVJONESART. KEEP UP TO DATE AT WWW.BEVJONESART.CO.UK

PLANNING APPLICATIONS
**PROTECTING THE CHARACTER
OF OUR NEIGHBOURHOODS**

The role of residents' associations in monitoring planning applications and their potential impact on the local environment is particularly vital at a time when Croydon is considering how to deliver on a housing target of 32,890 new homes by 2036.

Speaking at a meeting of residents' association representatives and town planners held on 6 November, Heather Cheesbrough, Croydon's Director of Planning and Strategic Transport, described residents' associations as "the best conduits to residents, who should notify them [of intended developments] as they decide is appropriate." Otherwise, notice of planning applications will only be posted through the letterboxes of immediately adjoining properties – with the exception of when ten or more dwellings are being considered for the site in question. The number ten is the threshold where a development is described as 'major.'

Residents' associations understand that any development can be significant when it has the potential to impact on our environment and change the character of our area. The round-up of this year's bigger local planning applications, listed below, includes a garden development that could have set a very dangerous precedent and demolition of a warehouse boasting a century-old local business.

19 ASHBURTON ROAD

This back garden development was the most worrying. Approval was sought for the use of a single-storey outbuilding as a single dwelling covering over 50 per cent of the large back garden. The brick-built block had been constructed before the main house was converted into four flats. This would have been an outrageous development if approved and would have set a very bad precedent which could have led to increased building



WALL TO WALL TO WALL
THE BACK GARDEN
DEVELOPMENT TAKING UP
ALMOST THE ENTIRE BACK
GARDEN AT 19 ASHBURTON ROAD

encroachment into back gardens or the disappearance of back gardens altogether.

Approval was granted for the use of it as ancillary to the main house. However, it seemed that the owner had other plans. A further application was made to change it to business use and the latest one was to turn it into a single dwelling. Fortunately, both of these have been refused. What can we expect next?

60 OUTRAM ROAD

This bungalow was demolished to create a block of six flats. An additional application was recently lodged to discharge some of the conditions of the original approval and to increase the size of one of the flats. This was approved.

APPLETREE COTTAGE, ASHBURTON ROAD

The fate of this lovely Arts and Crafts-style family home still awaits a decision. The applicant proposes

to demolish this small house and build a block of flats in its place. This needs to be monitored as, whilst it might not be possible to stop its demolition, sufficient pressure from residents might be able to keep the development to a reasonable size and improve its design.

42 ELGIN ROAD

This Victorian house had been granted approval to be used as a house in multiple occupancy in 2008. However, soon after, the individual rooms were turned into self-contained flats. It seems that the council was aware of this, yet no action was taken to return the house to its permitted use. After four years, the council retrospectively approved conversion into six flats – from 16m² to 22m² in size. Such substandard living space is not what this area needs. What Addiscombe needs is family-size accommodation. H.O.M.E has started a complaint procedure and

NEW END OF TERRACE?
AN APPLICATION IS IN TO
REPLACE 100-YEAR-OLD BUTTON
HOUSE WITH A DEVELOPMENT
CONTAINING THREE HOUSES



is considering taking the matter to the Local Government Ombudsman.

178 LOWER ADDISCOMBE ROAD

The old Lansdown Hotel forms the main part of this development, which has been extended and converted into flats. H.O.M.E objected to this back-garden build on the basis of overdevelopment. However, approval has been granted

BUTTON HOUSE, 2A EVERTON ROAD

An application was submitted to demolish the single-storey premises of this button supply business, which first opened in 1913, in order to cram two flats and two houses onto a plot not much bigger than the neighbouring terraced house and garden. CHASE submitted objections and revised plans followed, with the number of dwellings reduced to three houses and a front elevation more in keeping with the road. Planning approval is pending.

With the particular responsibility of looking out for the interests of a designated Conservation Area, H.O.M.E are coaching more people on how to review planning applications. Relevant new applications are considered by H.O.M.E's committee who assess if residents need to be advised to act.

H.O.M.E's website's Planning section lists new applications and guidelines of what can and cannot be done are in two documents available to download: *Conservation Area Appraisal and Management Plan*, and *The East India Estate CA Appraisal and Management Plan*, which is specific to the Conservation Area.

Although not in a Conservation Area, CHASE's road representatives keep an eye on developments and, whilst not objecting to reasonable sub-divisions and new housing, its committee meets to decide which applications warrant making objections to.

THE NEW DEVELOPMENT FRAMEWORK

Consultations on two important documents which form part of the Local Development Framework ended on 15 October

The draft Suburban Design Guide Supplementary Planning Document [SPD2] provides guidance for suburban residential developments, those in Areas of Focused Intensification and extensions and alterations to existing homes.

SPD2 will form part of the Croydon Local Plan 2018 and is intended to assist in the delivery of around 10,000 homes in suburban areas, towards a borough-wide target of 32,890 new dwellings by 2036.

The document provides design guidance that seeks to both limit any negative impact on places – including the amenity of existing residents – and frame opportunities where increased densities could bring benefits to communities.

SPD2 will assist council officers in making decisions on planning applications and in the council's pre-planning application service.

Planning officers shared some early consultation findings with residents' associations in a meeting held at Bernard Weatherill House on Tuesday, 6 November.

There is seen to be more need for three-bed houses, rather than larger homes. Outside of conservation areas, building materials and the design of housing would respond to – rather than replicate – the surrounding environment.

Impact on parking and amenities will be given detailed consideration as part of the planning approval process.

The council is also encouraging more planting within new developments, especially of native species.

Consultation submissions are being considered as the planning department revises SPD2 to present for adoption by a meeting of the full Council in March.



THE TRAM STOP CAFÉ

LOCAL SERVICE

Her hair in a neat ponytail and wearing a claret-coloured apron matching those worn by serving staff behind the counter, Sarah McFadyen takes a break from kitchen duties to share the story behind The Tram Stop Café. Given the welcoming environment and efficient service this coffee shop has been known for since opening its doors in May 2014, it is surprising to learn that the family behind its success are relatively new to the business.

Having been a regular customer of PMT Cupcakes – the tearoom-style cake and coffee shop that had previously occupied this prominent spot opposite Addiscombe tram stop – McFadyen was surprised to hear that the popular meeting place for mums on the school run was to cease trading in 2013. “I was devastated,” she says. “Where were we supposed to go?”

McFadyen turned her disappointment into a resolve to keep alive what she saw as a community asset and try

her hand at the café trade. “It was at the same time my husband’s dad, Jim, who had been in catering for years, was working at a pub that was going under. We said, ‘have you ever thought about running a café?’” The father- and daughter-in-law team entered a closed-bid competition run by PMT’s liquidators and suddenly found themselves on a new journey as coffee shop owners.

But would the newcomers be able to succeed where others had not? “We sat down and thought why did we love coming to PMT? It was because the staff were very friendly. We wanted to keep that and to keep the idea that it was the place for people in Addiscombe to meet. There were good cafés in the area, but there wasn’t much in the way of the type of coffee shop that we were aiming for at the time.

“We also wanted to attract more men than PMT had,” McFadyen says, “It was cupcakes, pink and girlie and

PRIDE IN OUR HIGH STREET

when my husband, Iain, would come with me he would have a coffee but wouldn't eat anything as he wouldn't always want cake. We wanted to broaden the menu and make it an environment that would appeal to men, women and families."

That balance seems to be in evidence as McFadyen speaks. In one quiet corner two men huddle over coffee cups perched on notebooks and a laptop connected to complementary Wi-Fi. On leather sofas by the large front window, two mothers sip hot chocolate as their young children nap in pushchairs.

Eye-catching cakes are still found in the shop counter display, but it is often the coffee and range of brunch and comfort foods, like warm potato salad, that are praised by customers who have given this modest suburban café an impressive number of five-star ratings on Trip Advisor and Facebook.

McFadyen explains, "The menu is always evolving and we try to offer a range of things, but the macaroni and cheese, full English breakfast, Welsh rarebit and French toast are still our best sellers."

Recent accolades include being listed amongst Trip Advisor's top three places in Croydon to go for coffee, a nomination in last year's Time Out Love London Awards and being highly

commended in the 2018 Proctors Best Breakfast Awards.

As its reputation has spread, and the tram system has made Addiscombe a convenient destination, the café welcomes a growing number of visitors from Beckenham and far-flung parts of Croydon. However, The Tram Stop remains rooted in its community, at times hosting residents' events such as meet-the-police drop-ins.

The café also provides local employment opportunities. Regular customers will be familiar with members of staff who have been with the café for a few years, but the McFadyens also take pride in providing flexible, shorter-term employment to younger people living in the area, on terms suitable for students and those on gap years.



THE TRAM STOP CAFÉ

231 LOWER ADDISCOMBE ROAD CRO 6RD

MON-FRI: 8 AM-5 PM

SAT: 8:30 AM-5 PM

SUN: CLOSED

CAN A TWO-PARTY WARD WORK? **THE STATE OF THE UNION**

May 2018 will live on in the memories of anyone with even a passing interest in local politics. Weeks of hyperactive campaigning by Labour and Conservative candidates marked the lead-up to what was sure to be a close-run polling day in the newly-created ward of Addiscombe East.

The final result was so close that it took four re-counts, until late the following morning, before the winners were declared – by a difference of only eight votes.

Addiscombe East, which includes most of the former Ashburton Ward and a large part of what had been Addiscombe Ward, had become a rarity in Croydon – a ‘split ward’ represented by one Labour and one Conservative councillor.

Six months on from that historic day, we asked councillors Jeet Baines [Con] and Maddie Henson [Lab] about their working relationship and their views on local issues. The councillors were interviewed separately.

WERE YOU SURPRISED WHEN ADDISCOMBE EAST WAS DECLARED A SPLIT WARD?

MH When you stand in any election you have to think of the possibility of losing. You also imagine the eventuality of winning, but the one strange scenario I hadn’t really seriously considered was this one. I assumed that it would be either me and [Labour candidate] Caragh [Skipper] or [Conservatives] Jeet and Joseph [Lee] who’d win. I hadn’t really seen it as being me and Jeet. It took me a while to adjust my point of view and think, ‘what does this now mean?’

JB If you go back two elections and before that, the old Ashburton Ward

was safely Conservative until the last time round, when it became Labour. I think areas which are still pretty Conservative and those which are solidly Labour are in this new ward. In that sense, it's not a surprise that we have a split ward, but the demographics are changing and we both have to work hard to make our case.

WHAT IS IT LIKE TO WORK ALONGSIDE A FORMER RIVAL?

MH There is no benefit to working separately from each other. One nice example is a month or so after being elected I went on holiday for a week and that meant that Jeet was responsible while I was away. The first thing we did when I got back was to catch up over lunch. The same applied when he went on holiday and the first thing we did was to catch up about what was going on.

JB In a split ward like this it really comes down to the personalities of the two individuals. I remember when the same happened in New Addington there might have been little co-operation between the two councillors, possibly because of the personalities involved, but Maddie and I get on pretty well and we've agreed that when it comes to solving problems it should be invisible to the community whether we are red or blue. When we have to do the politics stuff we will do that, but not in a



way that would be negative for the community. The reality of it also is that we are from two different parties, so on some things we will differ.

CAN YOU GIVE US ANY EXAMPLES OF YOUR JOINT EFFORTS IN THE WARD?

MH Very soon after we were elected, people called us with issues relating to Addiscombe Recreation Ground [on Bingham Road]. That is one long-term project that we are working on, including a review of the facilities like the old toilet block, which was closed because of electrical and plumbing issues, and we are looking at what we can do to rejuvenate it. We've been able to speed up repairs to the park gates, when historically there had been long delays to getting this done.



COUNCILLORS MADDIE HENSON AND JEET BAINES WHEN ASKED IF THEY HAD EVER VOTED AGAINST THEIR PARTIES IN COUNCIL, EACH QUICKLY REPLIED “NO” – BUT THEY HAVE FOUND COMMON GROUND IN LOCAL CAUSES

JB We have an issue with the traffic situation on the ‘ladder roads’ going all the way from East Croydon Station to Shirley Road, and Maddie and I are working collaboratively on that. I think it was Maddie’s suggestion that we get an independent facilitator involved as we’re trying to make it all completely neutral and non-party-orientated and trying to get more of the community involved in the decision making. That’s a perfect example of our collaborative work.

IS THERE ANY BENEFIT TO THE WARD IN HAVING COUNCILLORS WITH OPPOSING VIEWS?

MH In all honesty, I do think there can be an advantage to having two opposing points of view. I also think it’s quite reflective of Addiscombe

in a lot of ways. It is a [politically] marginal area with people from all sorts of backgrounds and experiences.

JB In one way, we both have to make sure that we are pleasing the residents so there’s no sitting back and not doing the job properly. It’s about the outcome for the benefit of the community, not about winning every little point along the way. For example, with the one-way traffic situation it’s not about me arguing that Labour have made decisions which have caused this problem. More important than that is getting a good outcome for Addiscombe East and for Addiscombe West as well.

WHAT DO YOU SEE AS THE BIG ISSUES FACING ADDISCOMBE EAST?

MH There are some very opposed views on some of the traffic flow changes that have been introduced. I think we can only reach a solution that is going to be agreeable to all once we start to get people in Addiscombe to talk to each other. There is no way we can

come to a solution that we are happy with if people aren't talking.

The other big issue is Blackhorse Lane Bridge. The latest is that it won't be re-opened until January 2020. We are pushing for an earlier date if we possibly can. We think that the way it has been handled by Transport for London is unacceptable. And to have this again, such a short time after Spring Lane, makes it even more of an insult. Sarah [Jones, MP] and I want to see full compensation for those worst affected by it, particularly those living on Black Horse Lane.

Also, I was very clear in the election that keeping up the high street was a massive priority for me. Where else can you see a district centre quite like Lower Addiscombe Road? It's unique in having an independent toy shop and an independent butcher, for a start, and protecting that is a really big priority. We have to protect our neighbourhood and include the community on a wider basis.

JB An obvious one is Blackhorse Lane Bridge and I've done quite a lot of campaigning to make an issue of the constant delays. I've heard that at least one shop on the Lower Addiscombe Road has closed because of loss of trade and at least one other has said to me that they don't know if they can survive another year. But it's not just the bridge itself,

but as a result the traffic on Lower Addiscombe Road has really built up. Cars are more often at a standstill and pollution is increasing.

Another big one I would say is the displacement of traffic from East Croydon in this direction, particularly on Elgin Road. Then, of course, there is the general issue around the recycling bins.

ANY FINAL WORDS ABOUT YOUR EXPERIENCES?

MH ON WHAT DREW HER TO POLITICS As a teenager something had a profound impact on me – one of my closest friends confided in me that she was transgender. Neither of us really had a clue about what to do. There was a lack of quality information available and it taught me to fight for what's right and to try to help people. I would find quite often that I would be the one people went to for help.

JB ON THE LIMITS TO OPPOSITION There used to be a committee structure, just before my time on the council. Those committees, like scrutiny, finance, and so on, had a lot of power. If something didn't get past a committee then it wouldn't be passed [in council]. That all changed with the leader and the cabinet who control everything. So now, if you are not in power, it has become very difficult. In opposition in this environment you are left to other forms of influence, like social media, the media and campaigning.

NHW CO-ORDINATORS REPORT **OPPORTUNITY THEFTS ON THE RISE**

This area has recently experienced a number of brazen opportunity thefts, according to reports from local NHW Co-ordinators.

Planted flower pots and outdoor lights recently were taken from the front garden of a home in Addiscombe Avenue during daylight hours.

This was reminiscent of the thefts of hanging baskets and flower tubs on Highbarrow Road earlier this year.

On Nicholson Road, a flat got burgled in the middle of the day when the front door was left unlocked whilst the occupier popped out to the shop.

Within 15 minutes, someone had entered and grabbed a laptop, iPad, jewellery and cash. The thief might simply have spotted an easy opportunity.

NHW Croydon's theft prevention advice for this time of year is:

❑ Keep front drives and paths clear of rubbish and leaves. A neglected house appears unoccupied.

❑ If you go away, ask neighbours to put out and put away your refuse bins to make things look normal.

❑ Lock your porch every time to make things more of a challenge for criminals.

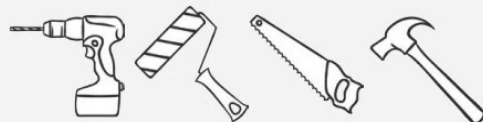
If you do see anything suspicious, keep a safe distance and report it.

ADDISCOMBE D.I.Y.

187 Lower Addiscombe Road
Croydon CR0 6RA



Decorating • Tools • Timber
Household Goods • Plumbing
Electrical • Loose Parafin
Ironmongery • Gardening
Key Cutting • Security Locks



8am—6pm Monday to Saturday
Tel: 020 8654 2880

PLASTIC PACKAGING

RECYCLING BY THE RULES

Most of us do our best to recycle, but when each council has its own rules the consensus on what you can and can't recycle can be a little bit muddled. If you have been puzzled by recycling labels that says "check locally" or if you chuck it all in the recycling bin to leave the sorting to the professionals, **Ellen Lands, Communications and Education Outreach Officer for Veolia Environmental Services**, explains what we should be doing



Recycling should be as easy and straightforward as possible. With the majority of food sold encased in plastic, it is important to know what to do with each item and whether or not it can be recycled.

In this article, you'll find some useful information to help you get the most out of your recycling collection service.

ITEMS THAT CAN BE RECYCLED

Your mixed recycling should be placed into your old general waste bin which has been repurposed for your plastics, glass, cans and cartons.

The following items can be placed directly into the bin for fortnightly collections:

- ❑ Plastic bottles
- ❑ Tubs, trays and containers
- ❑ Glass jars and bottles
- ❑ Cans
- ❑ Tin foil
- ❑ Aerosols [empty]
- ❑ Cartons

PAPER AND CARD SLEEVES

Many products come with a paper or card sleeve over the plastic packaging. Please remove this and put it in your blue lidded paper and card bin.

STICKERS OR LABELS

It is not essential that you remove stickers or labels from your plastic recycling. All plastic is cleaned at the

recycling facility where it is taken, and these will be removed during the recycling process.

FOOD RESIDUE

All plastic [or indeed any recyclable items] should be empty, with no food residue, ready for collection. These items can be rinsed through using the remains of your washing up water. Large amounts of food waste and residue on recyclables can make sorting the recycling much more difficult and expensive and can also reduce the quality and value of the recyclable materials. Sometimes this can cause recycling plants to reject a whole vehicle's load.

SQUASHING YOUR PLASTICS

The majority of plastic packaging can be recycled, including plastic bottles and caps, milk bottles and food trays. Plastic bottles can be squashed to save room in your recycling bin as well as the collection vehicles, the bottle cap can then be replaced or put in your recycling bin separately.

HARD PLASTICS

Hard plastics can be recycled, but not with your mixed recycling collection. Items like plastic garden furniture, and old plastic toys should be taken to your local Household Reuse and Recycling Centre [HRRC] and placed in the rigid plastics container.

There are three HRRCs in Croydon: Factory Lane, Fishers Farm and Purley Oaks. More information can be found online: croydon.gov.uk/recycling

ITEMS THAT CANNOT BE RECYCLED

Some plastics cannot be recycled in your kerbside recycling service. Below are a few examples of items which should be placed in your general waste bin instead:

- ❑ Crisp packets and sweet wrappers – These are made of metallised plastic film which is not currently recycled.
- ❑ Plastic carrier bags – Please reuse these! They are not collected with your recycling collection service, however some local supermarkets offer plastic bag recycling schemes.
- ❑ Plastic films - These are often used to cover ready meals but are unfortunately non-recyclable, this also applies to cling film.

WHAT HAPPENS ONCE MY RECYCLING IS COLLECTED?

The mixed recycling is taken to a materials recovery facility in Rainham, Essex. Here, machines are used to separate plastics by

polymer and bulked up ready for transportation to plastic reprocessing facilities.

At facilities such as Veolia's Plastic Reprocessing plant in Dagenham, Essex, plastics are shredded and melted to form pellets. These pellets are then sent to plastic manufacturers who melt them down and use them to form new plastic products, such as fleece jackets, park benches, compost bins, kerbside recycling boxes and of course, new plastic bottles.



FOR MORE INFORMATION ABOUT RECYCLING PLASTICS, PLEASE VISIT: WWW.SLWP.ORG.UK/PLASTIC-PLANET

SNT WARD PANEL UPDATE

The first Addiscombe East Safer Neighbourhood Ward Panel meeting, serving the new ward, was held on 5th October in Bernard Weatherill House and was attended by Chris Adams [CHASE], Melanie de Villiers and Norman Young [H.O.M.E]. Ward Panels normally meet quarterly to review crime statistics for the area and to decide on local policing priorities.

Local crime statistics are also available by visiting www.met.police.uk and typing your road name in the search box near the bottom of the page.

Our new Safer Neighbourhood Team [SNT] are Police Sergeant Tom Haji-Savva, Acting Sergeant Mez Gholami, PC Dean Littlewood and PCSO Alex

Maxted. They are based at the main police station in Park Lane, but you are more likely to encounter them walking the streets of Addiscombe.

You can contact the local Safer Neighbourhood Team directly on 020 8721 2474 or stop and chat when you see them on patrol.

You can also follow them on twitter on @MPSaddiscombeE.

Remember, in an emergency or to report a crime in progress call 999. If it isn't an emergency or to report a crime that has already happened, call 101.

All residents are welcome to join meetings of the panel. Contact the SNT for details.



**SERENITY
BEAUTY**

www.serenitybeautycroydon.com

201 Lower Addiscombe Road
Addiscombe CR0 6RA
Tel: 020 8656 3330 | 07599 068 716



**Body treatments & massage ■ Manicure ■ Pedicure ■ Make-up ■ Facials
Indian head massage ■ Eyebrow shaping ■ Moroccan tan ■ Eye treatments
Waxing ■ Spray tan ■ Permanent hair removal**

BINS, BINS, BINS!

When Croydon Council introduced new recycling and waste collection bins at the beginning of September, the consensus in the area was that the roll-out of the new system hadn't worked as seamlessly or as efficiently as it could have.

We have heard from some, particularly those with larger families and bigger front gardens, who are very happy to have bins that can accommodate more recycling.

Some in flats or communal living want larger containers to manage all the rubbish that accumulates in their bin sheds and hope the new sizes might also encourage better separation of recyclable waste.

However, more residents have complained of being left with too great a volume of bins for their needs. Some flat-conversion properties have been inundated with up to four or five bins per dwelling. With no space to store them, some

have resorted to keeping their excess bins on the pavement, which goes against council rules.

The council has acknowledged that large bins were delivered in error to some roads with very small front gardens and has changed them.

However, many individual requests to go back to the old bins have been turned down, even for those with tiny front gardens and those who generate little waste.

Changing rules and inconsistent responses have left many confused.

In the first instance, questions or complaints about your bins should be made to the council's waste services.



AN ASHBURTON ROAD EXPERIENCE

“The aim of increasing recycling is laudable, but it’s another lazy one-size-fits-all approach. I hate being bullied into accepting these unnecessary, huge eyesores into our gardens. When bins were brought in before there was some choice as to the size of bin we could have – not this time.

“I have written umpteen emails, and was told there would be a site visit to judge whether, in the council’s view, our property was suitable to receive the bins, but we had no idea when this visit would take place, so no discussion or explanation was possible. Finally, this week we had an email to inform us that our property was ‘deemed suitable for the current waste collection service and the bins’ and that there is ‘no appeal.’

“We are a two person household and very conscientious about recycling, but the new bins, particularly the

blue-topped paper bin, created a headache for us to manoeuvre because of their size.

“They do not fit down the side passage any longer, so the only option is to store them in the front garden where we have a packed planting scheme of flowers and shrubs cared for over a long period – and enjoyed by everyone. Even in the front garden we will have to dig up some plants to accommodate the eyesores, and as the existing paths are too narrow to push the blue-topped bin down easily, we will have to cut plants back. Then, when at the front gate for collection we cannot get past the bins, so more plants will have to come up. So many small reductions to cultivated spots must have an impact on reducing the ‘greening’ of Croydon and hence air quality!

“We have always flattened all boxes and cartons, so we do not need anything as large as the ones supplied. All we are asking is some choice in the matter – smaller bins for those who already recycle well and keep waste to a minimum.”

Please also feel free to contact your residents' association. The more RAs hear from local residents, the better chance they have of presenting a full picture to the council on your behalf.

If you have been left with bins that don't suit your situation you can email Croydon Waste Services outlining your concerns and issues: WasteServices@croydon.gov.uk

A VIEW FROM NICHOLSON ROAD

“At the end of July I arrived home from work to see that my collection of bins had increased from two general waste wheelie bins and four recycling tubs, to eight wheelie bins and four recycling tubs. Being in a flat conversion with three flats and only a small patch of concrete outside to store bins, not all of them can fit on our property so some are having to be kept on the pavement.

“After multiple emails and phone calls to Croydon Waste Services there is still no end in sight. I did receive an email some time ago saying that my issue

had been resolved, only to return home and find all bins still there! Another follow-up email complaining about that went unanswered. During the most recent phone call I was told that my issue had been escalated but they were unable to tell me when my excess bins should be collected.

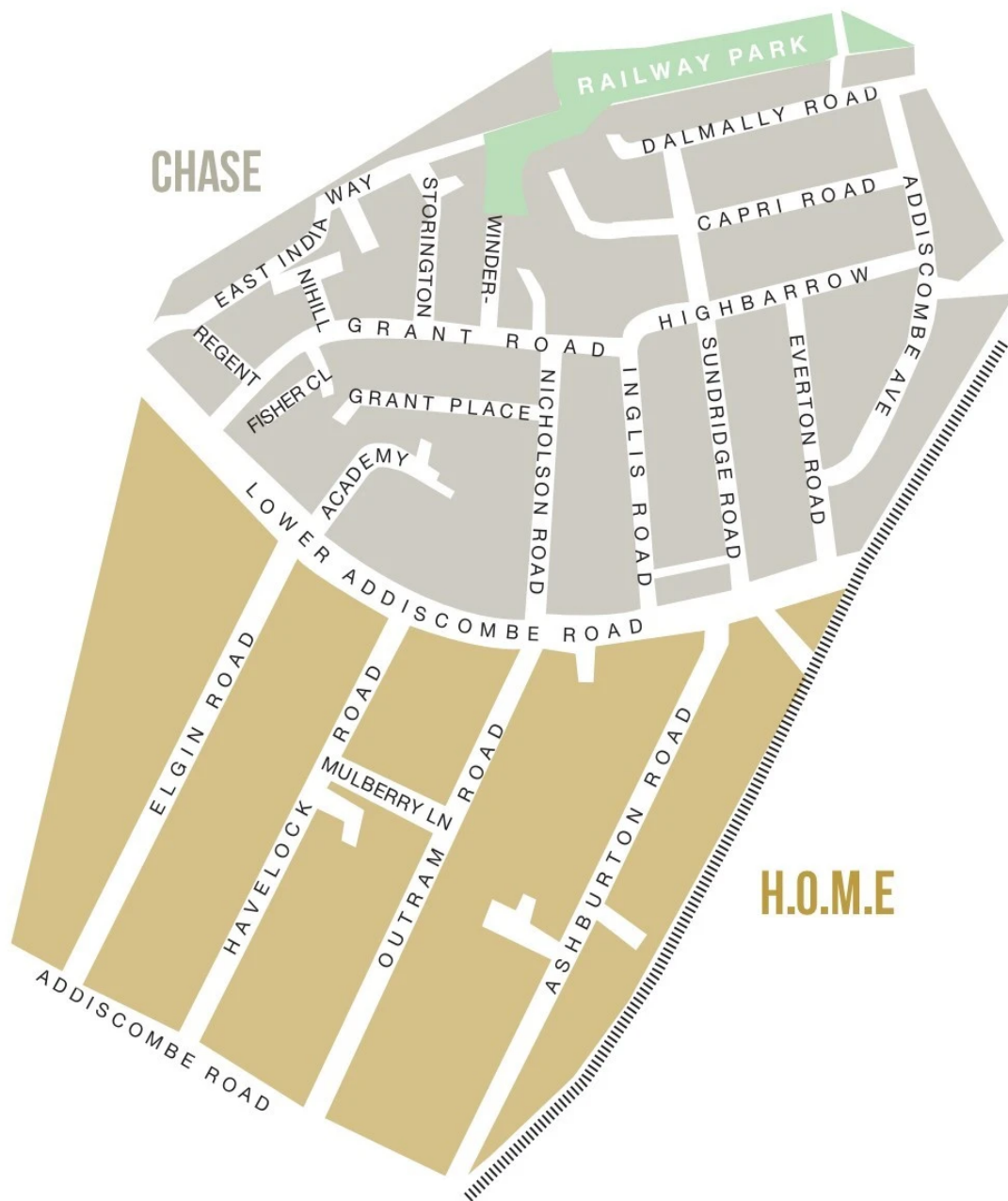
“All 12 bins are still sitting outside and the sheer number of them is rather unsightly. We only need a maximum of four bins for our flats, and that's all that we can store.

“Many conversion flats on my road have the same issue and Nicholson Road currently looks like a tip with all the bins having to be kept on the pavement.”



RESIDENTS' ASSOCIATION NEWS

Everyone who lives in H.O.M.E and CHASE roads is automatically a member of their respective residents' association. The newsletter pages of Heron Magazine keep residents up to date with the activities of their committee members and other association volunteers and invite readers' participation at community and social events.





COLLABORATIONS, CLEAN-UPS AND CRAFTS

This year's changes to council electoral boundaries has seen CHASE building closer ties with organisations in the new Addiscombe East Ward. We had always enjoyed good relations with ASPRA, Blackhorse and H.O.M.E residents associations, with whom we share the high street, but as we now find ourselves represented by the same local councillors, it only seems sensible to collaborate more closely on projects of common interest. At the same time, we still support the activities of our old friends in the former Addiscombe Ward, like the campaign to save the Glamorgan Pub and efforts to resolve the one-way system that has disrupted the daily

commutes of many of our members. One obvious example of our new collaborations is this magazine. We also have been pleased to work jointly on projects to improve the area. In June, alongside ASPRA, we removed litter and weeds from Addiscombe Tram Stop. In September, our four RAs took part in the newly-expanded Jumble Trail, which boasted more than 70 stalls selling a range of items including books, toys, clothes, arts and crafts and homemade treats. In October, we joined ASPRA and local councillors to attach dozens of large poppies to lampposts on Lower Addiscombe Road in commemoration of the Armistice Day Centenary.

NEWS FROM CHASE

CHASE's next contribution to the wider community is to the Addiscombe Winter Carnival, organised by ward councillors, the council, all four local RAs, Greenwich Leisure and the Cronx Brewery. Please join us at Ahsburton Hall on 9 December to enjoy live entertainment, buy gifts, sample mulled wine and meet your neighbours in a festive atmosphere.

Keep Addiscombe clean

It has been noticed that there has been an increase in the number of properties with a build-up of rubbish and general waste in their front gardens. Please note that if bin bags or rubbish are not put in the waste or recycling bins then the bin men will not take them away. If you do have excess waste you can contact Croydon Waste collection on 020 8726 6200 and they can explain your options, depending on what it is that you have to be collected. Excess recycling can be taken to centres in West Croydon, New Addington and South Croydon.

There unfortunately also has been an increase in fly-tipping in our area. If you do spot any instance of fly-tipping please report it to Croydon Council by emailing flytip@croydon.gov.uk or via the Don't Mess with Croydon app which is available for download for iPhone and Android. You can

also phone the dedicated fly-tipping hotline 020 8604 7000. Please take responsibility for the rubbish on your property as well as taking some pride in our community. Keep Addiscombe clean and tidy.

Litter-pick & walkabout

All CHASE residents are invited to join our next tidying-up session in the New Year. The plan is to pick up litter and report fly-tipping and graffiti we come across. Our ward councillors have been invited to join us to take stock of any issues to be raised with the council or police. The council will provide litter pickers, gloves and rubbish bags. Meet us outside the Alma Tavern at the corner of Grant and Lower Addiscombe roads at 11 am on Saturday, 26 January.

Over-60s Social

Senior CHASE residents are invited for games, prizes and cream teas at 2pm on 9 February at Clyde Hall.

Crafts Club

Bring your crafts projects along to the Addiscombe Sport & Social Club in Dalmally Passage to share tips and show off your skills – anything from needlework to paper crafts and beyond. We meet at 8pm on the first Wednesday of each month.

H.O.M.E

Residents' Association



TRAFFIC, THE TRIANGLE AND IMPROVING THE ENVIRONMENT

Stressful streets: Assessing the new one-way system

H.O.M.E roads have been impacted by the closure of northbound routes in Addiscombe West [Lebanon Road, Addiscombe Court Road and Canning Road]. This has increased local congestion and journey times and displaced traffic onto our residential roads in Addiscombe East.

Overall in London, traffic congestion is on the increase: private car usage has fallen but there is an increase in delivery vehicles and private hire vehicles. Elgin Road's traffic has increased by over 40 per cent since the

latest changes in Addiscombe West. It now acts as the 'Addiscombe West bypass' for motorists and delivery vehicles wishing to travel to and from addresses in that large residential area. Elgin Road carries over 3,000 vehicles per day, creating serious safety issues. Noise and pollution have increased and there has been a spike in major accidents requiring the response of the emergency services. It is simply a matter of time before someone loses their life. Havelock Road, too, has seen an increase in traffic and suffered collision damage to trees.

New retail and housing developments in Croydon and a lack of sensible

NEWS FROM H.O.M.E

investment in the main road network will put further pressure on all H.O.M.E roads in the future.

H.O.M.E has complained to the Local Government Ombudsman about the decision to change Addiscombe Court Road and Canning Road. This is now under investigation. At the same time, our councillors are arranging a series of community traffic meetings to see if we can find common ground with our neighbours and agree simple, easily achievable changes that would improve the situation for the whole area and take the pressure off our roads. Please look out for the dates and attend to have your say.

The Addiscombe Triangle Project

H.O.M.E has been busy planting three trees in the triangle of land at the end of Ashburton Road, where it joins Lower Addiscombe Road. There are two chancicleer pears and a mulberry.

A sterling team of volunteers kept the trees watered through the summer to establish them and kept litter at bay. Almost a thousand bulbs have been planted recently so we can look forward to a stunning spring display. We have crocuses, tulips and narcissi to complement the circle of daffodils already there. We have also asked for a new litter bin. The old 'no ball

games' sign should be removed, and some tubs of shrubs should be placed across the road from the Triangle.

This project was made possible by a grant from a councillor's ward budget and we hope to add a noticeboard next year.

H.O.M.E in Bloom update

Now is the time to start working in your gardens and getting them ready for the H.O.M.E in Bloom 2019. We have had the results of 2018 winners sent by emails to all who have filled in the membership forms.

The 5th H.O.M.E in Bloom was held a bit earlier than previous years. The judging was held on 26th May. We would like to thank all residents who have nominated the gardens, boxes and walls – there were 42 nominations. Have a look at www.home.addiscombe.net to see photos of all the nominated gardens.

Our area is diverse, we have big and small gardens, large and small properties, conversions as well as purpose built blocks of flats. Therefore judging what garden has most positive effect on our roads is not an easy decision to make. We give a big thank you to the organisers and judges – Lesley, Susan, Mira and Carol for taking it on.

NEWS FROM H.O.M.E

The overall best-liked garden was 4 Mulberry Lane with its simple design and colour.

The most-liked garden in each road were awarded a certificate:

- 64 Elgin Rd
- 70 Havelock Rd
- 74 Outram Rd
- 2 Ashburton Close

Well done everyone and we hope to see more tended and loved front gardens the next year. The H.O.M.E in Bloom Committee is inviting anyone keen to join them in 2019.

H.O.M.E Clean-ups

Following on from the success of our previous cleanups, residents have asked for it to become a permanent bi-monthly event. The next jolly cleanup will be on Sunday, November 25th, 11am to 1pm.

We'll meet at Tim's: 4 Wavell Court, Elgin Rd. CR0 6XB [more or less opposite the Elgin Nursery]. Do come and enjoy a well deserved cup of tea afterwards.

For future clean up events call Tim on 020 8654 4034, 07528 570058, timduce@mac.com and always check our web for updates.

Tim, Elgin Road is our 'Keep H.O.M.E Clean Champion'- Thank you Tim :)

If you would like to be the Champion for your road, please get in touch.



THE WINNING GARDEN AT 4 MULBERRY LANE AND OTHER NOMINATED GARDENS

NEXTDOOR

THE WEBSITE AND APP CONNECTING NEIGHBOURS

Nextdoor is a free social media platform that provides a new way for neighbours to share local information. It is often used to ask for recommendations for childminders, gardeners or tradesmen, or to sell or swap second-hand items.

Members can stick to sending and receiving posts from their immediate area or link to nearby 'neighbourhoods.'

There are seven active groups in this part of Croydon, with CHASE and H.O.M.E in the Addiscombe Railway Park and East Croydon neighbourhoods, respectively.

To join the local conversation, visit www.nextdoor.co.uk or download the app for iPhone or Android and fill in the fields with your postcode and address. A moderator will make sure that you end up in the right group.

H.O.M.E NEW YEAR SOCIAL

If you live in H.O.M.E roads we would like to invite you to our
New Year Social
on Saturday 12 January
from 3-6 pm at 31 Havelock Road

Our socials are friendly and informal, with food and refreshments available, some of which we provide while contributions will be gratefully received. "Unwanted" gifts will also be welcome for our always popular raffle. So, do come along and bring your neighbours with you!!!

RSVP please via email: athome@addiscombe.net
or drop this slip into the letterbox at one of the addresses below

27 Havelock Road | 74 Outram Road | 44 Elgin Road | 16 Ashburton Road

Name Number of people

EVENTS

WHAT'S ON
**IN AND AROUND
ADDISCOMBE**

**'Tis the season, but which fair to attend?
[We say fit them all in]**

WOODSIDE ACADEMY CHRISTMAS FAYRE

Morland Road

Sat 1 Dec 11am–3pm

Best for: Kids' activities, homemade treats and Father Christmas

ST MILDRED'S CHRISTMAS MARKET

30 Bingham Road Croydon CR0 7EB

Sat 1 Dec 12:30–4:30pm

Best for: Crafts, one-of-a-kind gifts and mulled wine

ADDISCOMBE WINTER CARNIVAL

Ashburton Hall, Ashburton Park

Sun 9 Dec 12–11pm

Best for: Community stalls, live entertainment and bar until late

EVENTS

MUSIC & ENTERTAINMENT

Live music

The Oval Tavern
Daily from 8pm

Jazz in the Afternoon

The Oval Tavern
Sundays 1pm



Croydon Philharmonic Choir: Choral Classics

St Mildred's Church
Sat 17 Nov 7:30–9:30pm
www.croydonphilharmonic.org

Surrey Opera Christmas Soirée

The Addiscombe-based society presents an evening of carols, opera choruses and more at the Concert Hall of the Whitgift School.
Sun 16 Dec
www.surreyopera.org

SOCIAL EVENTS & CLUBS

Barn Dance and Supper

for all the family at St Mary Magdalene
Sat 24 Nov 7pm
www.stmmm.org.uk

H.O.M.E New Year Social

A relaxed gathering for members in H.O.M.E roads. Details on page 39.
Sat 12 Jan 3-6 pm

CHASE Over 60's Social

Quizzes, games, prizes and high tea at Clyde Hall. Members over 60 and guests, just turn up.
9 Feb 2–4pm at Clyde Hall,

CHASE Crafts Club

Addiscombe Sports & Social Club,
First Wednesday of each month 8pm

Wendy's Pub Quiz

The Oval Tavern
Wednesdays 8pm

Knit and Stitch

Ashburton Library
Fridays 9:30am–11:30am

Café M at St Mildred's Church

Meet neighbours over breakfast rolls and cakes. 10am–12pm
Sat 5 Jan Sat 2 Feb
Sat 2 Mar Sat 6 Apr

Cafe Creative

Learn and share craft skills like knitting and patchwork over tea and cake. St Mary Magdalene
First and third Thursdays of the month 1:30–3:30pm

World Café

Cakes and drinks at St Mary Magdalene [term time only]
Wednesdays 12pm

Orchard Wassail

Addiscombe Railway Park.
An ancient ritual to waken the trees and encourage a good harvest. Wear bright clothes and make lots of noise. A free event suitable for all ages.
Sat 26 Jan 2–4pm

EVENTS

HEALTH & WELL-BEING

Just Live Well

12-week lifestyle advice and support at Ashburton Library
Mondays 12–2pm

St Mildred's Centre

Hold daily exercise and fitness classes including pilates, yoga, ballroom dancing, tai chi and Zumba
www.stmildredschurch.org.uk

YOUTH & TEEN

The Sir Philip Game Centre hosts daily events. www.spgcentre.co.uk



Girls' Night, Palace for Life Foundation

Mondays 5-7pm

Table tennis

Under-16s 6–7:30 and Over-16s
Tuesdays 7:30–10:30

Table tennis

Under 16s 3:30–7pm and Over-16s

Wednesdays 7–10:30pm

Solidrock Youth Club

Juniors [6–12 years] 4:30pm–6pm
and Seniors [12+]
Thursdays 6:30–8pm

Friday Youth Club

With pool table, table tennis, football, music, activities, cooking.
12 years and over
Fridays 6:30–9:30

Homework Club

Saturdays 10.30–11.30am

LECTURES & LEARNING

Adult events at the Ashburton Library. Contact the library for details.

Mondays 11am–12noon

IT Sessions

for those needing to learn computer skills. Free sessions but booking required. Ashburton Library
Tuesdays & Thursdays 11am & 12pm

The Lit Society at St Mildred's Centre welcomes non-members for a small entry fee.

www.stmildredschurch.org.uk

The Old Palace and Bishops

Tue 20 Nov 8-10pm

World War 1 and 2

Tue 15 Jan 8-10pm

The Vanishing Maidservant

Tue 22 Jan 8-10pm

The RNLI St Mildred's Church

Tue 29 Jan 8-10pm

The Tale of the Tulip

Tue 5 Feb 8-10pm

Beulah Spa

Tue 12 February 8-10pm

EVENTS

Rome to the Rockies

Tue 19 Feb 8-10pm

Travels with a camera crew

26 Feb 8-10pm

The world on her bike

5 Mar 8-10pm

Land of the Pagodas [Burma]

12 Mar 8-10pm

Women with Attitude

19 Mar 8-10pm

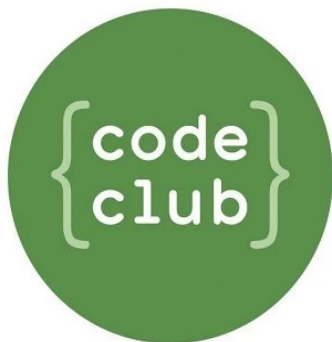
CHILDREN & FAMILIES

Rhymetime for babies and young toddlers
Ashburton Library
Tuesdays 11–11:30am

Parent & 0-5 Club St Mary
Magdalene, Canning Road
Wednesdays 2pm

Wiggle 'N Jiggle For toddlers
Ashburton Library
Thursdays 11–11:30am

Book Buddies Stories and crafts for
children under 7 Ashburton Library
Thursdays 4–4:30pm.



Code Club For children aged 9–13.
Free sessions, booking required
Ashburton Library
Saturdays 11:30am–12:30pm

Storytime with Jenny

For 1–7 year-olds

The Oval Tavern

Saturdays [fortnightly] 1pm

COMMUNITY & VOLUNTEERING



Gardening and tidy-up

Friends of Addiscombe Railway
Park welcome volunteers helping to
maintain the community garden and
park. See <http://park.addiscombe.net>
Sun 9 Dec 1–4pm
Sun 13 Jan 1–4pm
Sun 10 Feb 1–4pm
Sun 10 Mar 1–4pm

H.O.M.E Clean-up

Join the next of this now bi-monthly
litter-pick. Details on page 38.
Sun 25 Nov 11am–1pm



CHASE Litter-pick and walkabout

Meet at the end of Grant Road.
Details on page 35.
Sat 26 Jan 11am–1pm

EVENTS

Established 1974

Addiscombe Dry Cleaners

SHOE REPAIRS LAUNDRY IRONING REPAIRS & ALTERATIONS



195 Lower Addiscombe Road
Addiscombe CR0 6RA
Telephone 020 8654 2269



20% off your next Curtain Cleaning order with this advert

Open Monday to Saturday 8:30 am – 5:30 pm | Wednesday 8:30 am – 1:00 pm

COUNCILLORS' SURGERIES

Cllr Jeet Baines

Ashburton Hall
First Saturday, of every other month,
starting 2 June 2018.
10-11am

St. Mildred's
First Saturday of every other month,
starting 7 July 2018.
2-3pm

Cllr Maddie Henson

St Mildred's Centre
First Tuesday of every month
6-7pm
Longheath Community Centre
Third Saturday of every month
10-11am [except December]

SARAH JONES, MP SURGERIES

Surgery appointments run for
20 minutes between 10:30-12:30.
Appointments must be booked in
advance. To book a surgery please
email sarah.jones.mp@parliament.uk
with your: full name, full address
& postcode, contact telephone, and
one line description of the issue you
would like to discuss

Croydon Town Centre

1st Friday of the month

Addiscombe

2nd Friday of the month

Shirley

3rd Friday of the month

New Addington

4th Friday of the month

A READER'S VIEW **ON PARKING**

Parking in Croydon has become an increasingly acrimonious issue. As some streets in Addiscombe become areas of controlled parking, with pre-pay bays and parking permit use, adjacent uncontrolled parking streets suffer congestion.

To avoid this congestion some residents of uncontrolled streets request they become controlled to avoid crowding. On a controlled street you need to buy a permit for a few hours or purchase a residents' permit to park in the zone. It costs £80 for the first permit and £126 for the second. Households will no longer be able to buy a new third permit but those who do already have one will be able to renew their permits for £305 as previously. Permits for housing estates currently cost less. Having a permit does not mean you will find a vacant space near your home.

The size of parking spaces marked out in local streets does appear to vary considerably from adequate to

remarkably small, considering the size of modern cars. You must park with wheels within the parking space, any wheel outside the space could be photographed and a parking fine imposed. A recent fine was imposed for having a car parked 2cm on the dropped kerb outside the owner's house early on a Sunday morning. It is this sort of fining that makes Croydon parking services less of a service and more of a cash cow for the council.

Traffic wardens in Croydon work at night and weekends so regulations are enforced 24 hours a day.

Double yellow lines mean no waiting or loading at any time. Single yellow lines mean no waiting or loading at the times indicated on nearby signs or signs at entry points to the Controlled Parking Zones. It is worth noting that these times may vary from street to street. If the signs do not indicate a day of the week the restrictions apply at the same time every day including bank holidays.

A dropped kerb enables you to park in your own front garden but requires consent from the council. An initial application costs £150 and not all applications will be agreed. This does not cover the cost of the work. This also does not guarantee access to your property. If a car is parked blocking your access there is little recompense as Croydon do not have a car pound and so will not tow away cars.

You do need to be aware of temporary parking restrictions. These are placed on lamp posts and such but may have a list of house numbers which are written on the notice and not visible from the relevant parking bays.

A large number of cars appear to be driving along the Addiscombe Road and across the junction with Chepstow Road and Clyde Road during the restricted hours. Recently, two friends who live outside Croydon were confused by the signage and received hefty fines for driving from East Croydon along the tram lines, not being able to avoid crossing the junction during the restricted times. It would seem the one-way system on Canning Road should allow traffic to flow north thus avoiding this dilemma. Or perhaps the income from the fines is too attractive!

A Frustrated Motorist

Name and address supplied



CONTRIBUTORS TO THIS ISSUE

Please direct all advertising and editorial enquiries to
Heron@chaseresidents.org.uk

Croydon Cat Killer

Susanne Kelly

Ward Panel

Melanie de Villiers

Recycling

Ellen Lands

Bins

Kylie Griffiths

News from H.O.M.E

Carol Porter, Sue Fender

Norman Young, Stan Goron,

Miriam de Souza, Mira Armour

News From CHASE

Barbara Bates, Kylie Griffiths,

Chris Adams

Advertising Sales

Barbara Bates, Belinda Bullick

Photography

Andrew Bennett

Copy Editor

Kylie Griffiths

Editor

Chris Adams

Addiscombe Railway Station 1975 photo
by Lamberhurst [Creative Commons]
Plastic bottles image from Veolia
Graphics include designs by Freepik.com

MIDDAY - 11PM

ADDISCOMBE

WINTER

CARNIVAL

ASHBURTON HALL

9th December

LIVE PERFORMERS * LOCAL BUSINESSES * LIVE MUSIC * MEET SANTA
CRAFT STALLS * STALLS FOR ALL AGES * IN AID OF ST. MILDRED'S DROP IN



CROYDON
www.croydon.gov.uk



—
**SELLING AT A
SNAIL'S PACE?
SWITCH TO OUR AWARD
WINNING SERVICE**



**BRITISH
PROPERTY
AWARDS**

2018



GOLD WINNER

ESTATE AGENT
IN CROYDON

streets ahead
ESTATE AGENTS



020 8655 1300 | www.streetsahead.info

britishpropertyawards.co.uk